

Double Leaf EI₂₉₀ / T90 Fire Resistant Air Tight Steel Door

Fire Protection	EI₂₉₀ / T90	tested acc. to EN 1634-1
Smoke Control (optional)	S_a, S₂₀₀ / RS	tested acc. to EN 1634-3
Self-Closing (optional)	up to C5	tested acc. to EN 1191
Air Tight	class 2	tested acc. to EN 1026

Certified in accordance with DIN EN 16034 / 14351-1 / 13241

General Building Approval as T90-2 (-RS) -FSA acc. to DIN 4102-5 / DIN 18095

Optional Audited Additional Functions

- Sound Insulation	up to R _{w,P} 54 dB	tested acc. to EN ISO 10140-2
- Burglar Protection	RC2/RC3/RC4	tested acc. to EN 1627
- Bullet Resistance	FB4/FB6	tested acc. to EN 1522
- Rain- and Fire-Water Tight	class 6A	tested acc. to EN 1027
- Wind load Resistance	up to class C5	tested acc. to EN 1221
- Blast Resistance	up to 20 kPa	tested acc. to EN 13124-1
- Explosion Protection	up to zone 1/21	acc. to EN 1127-1 or ATEX 2014/34/EU
- Stainless Steel		

Range of Dimension

Range of Dimension for Doors **Width** from 1375 mm to 3000 mm
Height from 1750 mm to 3000 mm

Range of Dimension for Hatches **Width** from 1250 mm to 1375 mm
Height from 500 mm to 1750 mm

Technical Specification and Tender Text

Product:	EI₂₉₀ / T90 double leaf fire resistant and air tight steel door brand Buchele tested acc. to EN 1634-1 and EN 1026
Door Type:	PLANE Line PL 902 BASIC
Air Tight:	class 2
Structural Opening: x mm
Door Leaf:	Double-walled, planar 70 mm thick steel door leaf without hinge embossing, three sides rebated with thick rebate. Without bottom stop. Special insulating inserts fully laid-in and glued. Passive leaf with multi-chamber sealing profile in the middle rebate. Securing pin screwed in door leaf rebate. Drop seal system. Passive leaf with multi-chamber sealing profile in the middle rebate.
Threshold:	Floor bracket as separation sill. Surface galvanized and welded to the frame.
Frame:	3-sided circumferential rebated corner frame with visible black coated intumescent material in rebate. High-quality multi chamber sealing profile adjustable fixed in the three-sided groove.

Hinges:	Three-part, height adjustable construction hinges with hinge pin retention and ball bearing spacer ring for smooth door movement.	
Door Closer:	2 pieces door closer system with standard arm acc. to EN 1154 silver coloured mounted on hinge side. Door coordinator and 2 pieces of 30 mm high brackets with plastic roller.	
Fitting:	Active leaf with mortise lock with latch lever function acc. to EN 12209 (prepared for installation of a profile cylinder lock, provided by customer). Door handle set in acc. to EN 1906 fixed pivoted synthetic material black in U-shape with rounded short-plate. Passive leaf with self-locking concealed shoot bolt lock with upper switch lock.	
Surface:	Door leaf and frame galvanized und primed with 2K-PUR primer (Very High Solid) similar RAL 7035.	
Installation:	masonry	≥ 175 mm
	concrete	≥ 140 mm
	areated concrete	≥ 200 mm
	mounting wall F60	≥ 125 mm

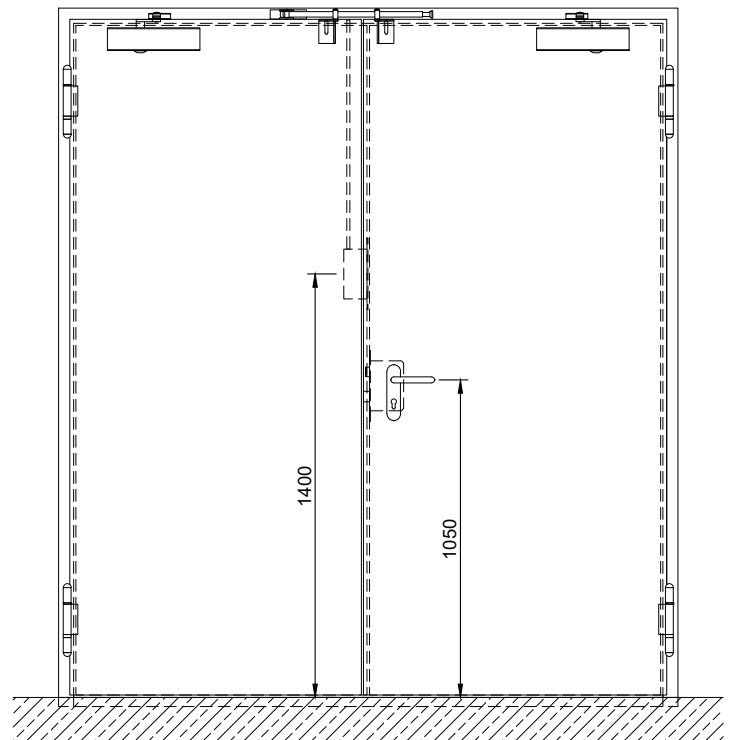
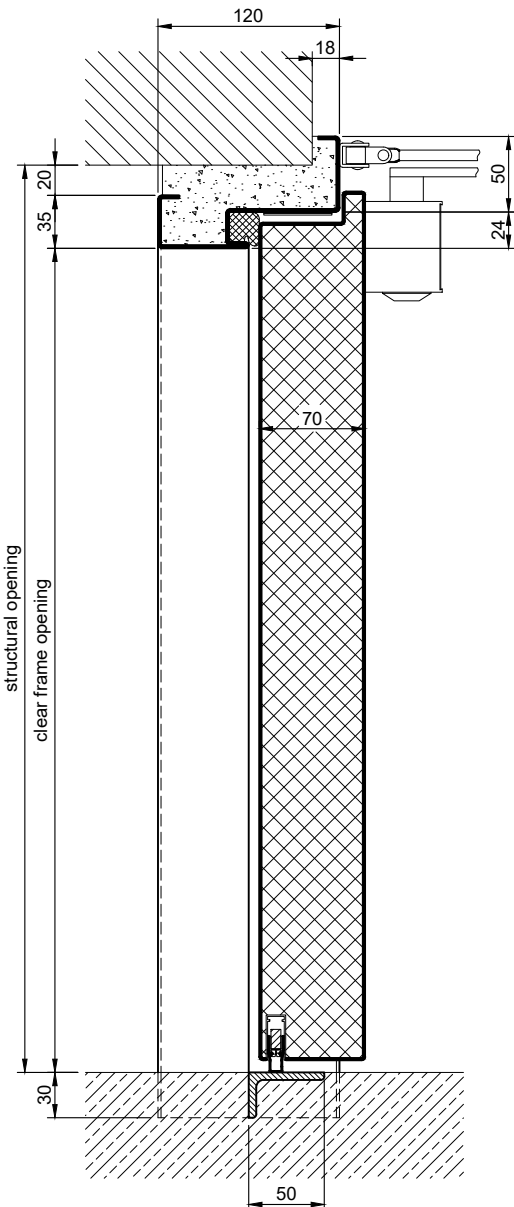
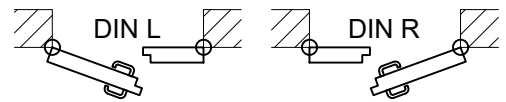
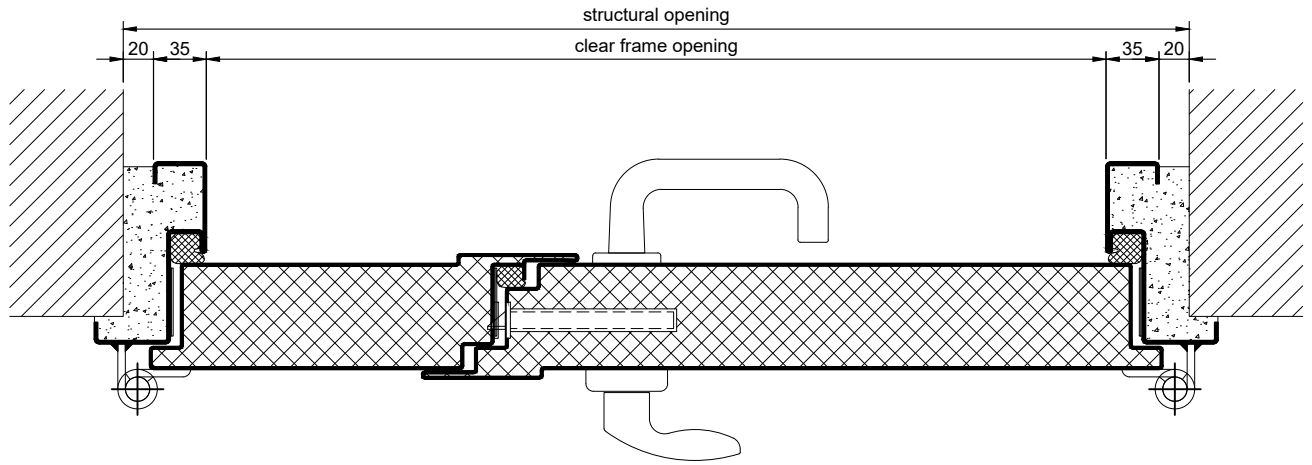
Alternative: PLANE Line PL 902 PREMIUM with flush mounted optics

Frame:	3-sided circumferential rebated PLANE Line special corner frame for flush mounted optics on hinge side. With visible, black coated intumescent material in rebate. High-quality multi-chamber sealing profile adjustable fixed in the three-sided groove.	
Hinges:	Object hinges type VB-3D 160 adjustable in three dimensions. Fixture element with slide bearings inside for smooth door movement.	
Door Closer:	Slide rail door closer system acc. to EN 1154 silver coloured mounted on hinge side.	

Alternative: PLANE Line PL 902 SUPERIOR with flush mounted optics

Frame:	3-sided circumferential rebated PLANE Line special corner frame for flush mounted optics on hinge side. With visible, black coated intumescent material in rebate. High-quality multi-chamber sealing profile adjustable fixed in the three-sided groove.	
Hinges:	Concealed hinge system adjustable in three dimensions.	
Door Closer:	Concealed slide rail door closer system acc. to EN 1154 integrated in frame and door leaf.	
Glazing:	F90 fire-protective glazing fixed with profiled and visible screwed steel glazing bars. Minimum border 125 mm on side and top, base 300 mm.	
Stainless Steel:	Material 1.4301 (V2A) or 1.4404 (V4A), Surface mill finish or brushed.	
BUCHELE DELUXE:	The exclusive surface coating.	

BASIC - Version



1.54.1_PLANE LINE PL 902 LD2_EN

technical modifications reserved - edition 05/2024

PREMIUM - Version

<p>object hinges VB-3D</p>	<p>construction hinges</p>	<p>slide rail door closer</p>
----------------------------	----------------------------	-------------------------------

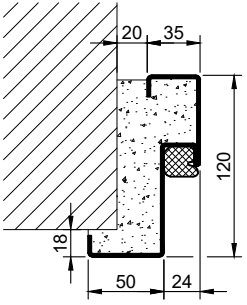
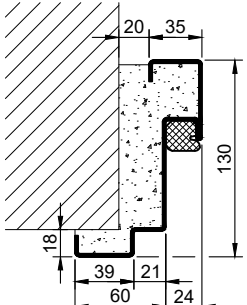
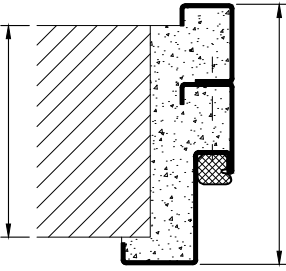
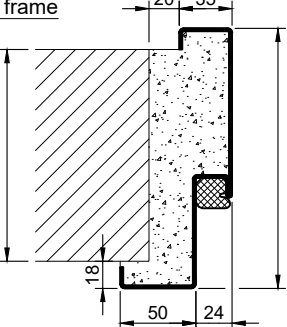
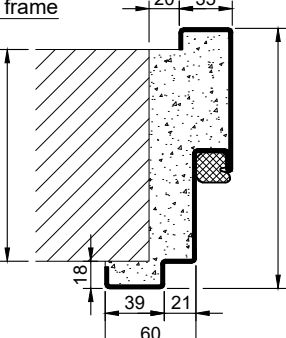
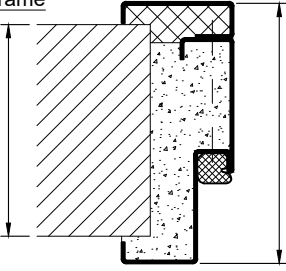
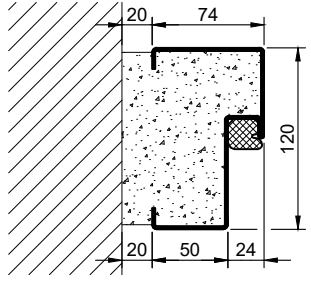
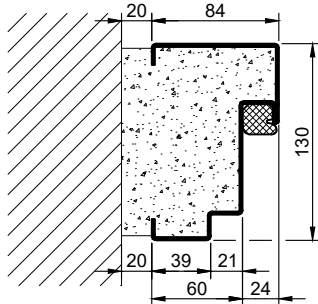
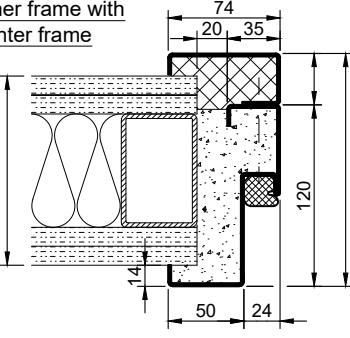
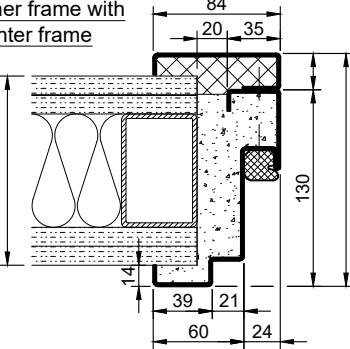
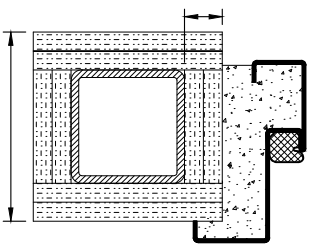
SUPERIOR - Version

<p>concealed hinges</p>		<p>integrated door closer</p>
-------------------------	--	-------------------------------

Options

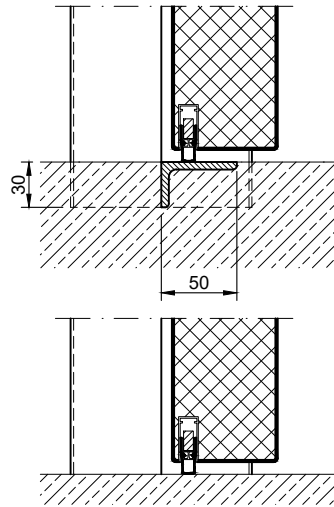
<p>glazing</p>		
----------------	--	--

1.54.1_PLANE LINE PL 902 LD2_EN

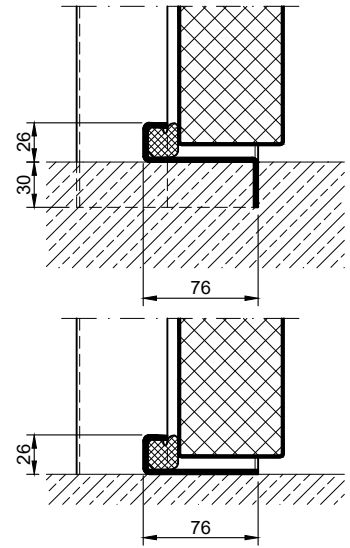
Frames BASIC	Frames PREMIUM/SUPERIOR	Variants (illustration BASIC)
<p>corner frame</p> 	<p>corner frame</p> 	<p>corner frame with additional frame</p> 
<p>encasing frame</p> 	<p>encasing frame</p> 	<p>encasing frame with counter frame</p> 
<p>block frame</p> 	<p>block frame</p> 	
<p>corner frame with counter frame</p> 	<p>corner frame with counter frame</p> 	<p>corner frame at support / pillar</p> 

Thresholds

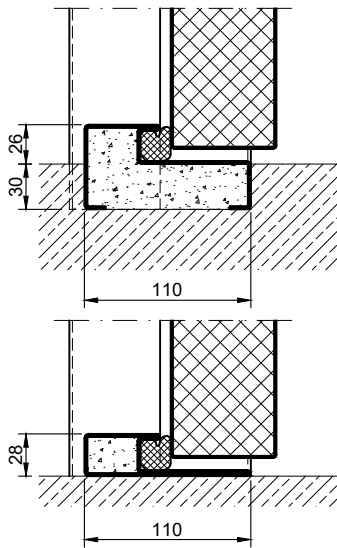
drop seal



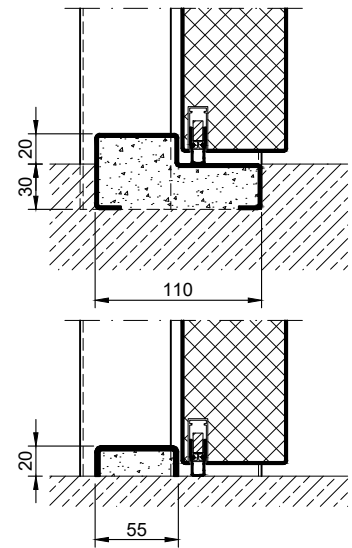
stop sill with seal



stop sill with seal



stop sill with drop seal



full sill

